

MADE IN FRANCE



Setting programs



Pre-heat time



Touch screen



QuickRelease® system



Pneumatic



10 year warranty on heating elements



3 year warranty on the machine



- Perfect heat & pressure distribution
- Double plate for caps or logos 16x16cm (plates sold separately)
- Robust frame
- Important height between plates
- Manual translation
- Suitable for laser transfer applications & pretreatment drying
- Ideal for high production

Email

sales@sefa.fr  
support@sefa.fr  
www.sefa.fr



Phone

Office : + 33 4 68 74 05 89



Address

SEFA SAS  
Z.I. PASTABRAC  
11 260 ESPERAZA (FR)



MADE IN FRANCE



Setting programs



Pre-heat time



Touch screen



QuickRelease® system



Pneumatic



Foot pedal



10 year warranty on heating elements



3 year warranty on the machine



- Perfect heat & pressure distribution
- Double plate for caps or logos 16x16cm (plates sold separately)
- Robust frame
- Important height between plates
- Bi-manual control (+ foot pedal control)
- Automatic translation from one plate to another
- Suitable for laser transfer applications & pretreatment drying
- Ideal for high production

Email

sales@sefa.fr  
support@sefa.fr  
www.sefa.fr



Phone

Office : + 33 4 68 74 05 89



Address

SEFA SAS  
Z.I. PASTABRAC  
11 260 ESPERAZA (FR)

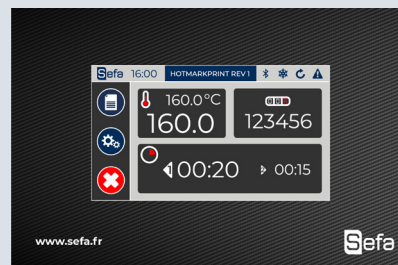


## TECHNICAL CHARACTERISTICS

Weight	60 kg
Pressure	1765 gr/cm <sup>2</sup>
Max temperature	220°C / 429°F
Power supply	240V (single phase)
Electric power	600 W
Amperage	3 A
Plate	CAP PLATE : 18x8 cm LOGO PLATE : 16x16 cm
Max product thickness	45 mm

Features	Pneumatic Automatic opening Automatic closing 1 heating zone
----------	-----------------------------------------------------------------------

## SETTINGS



Touch electronics developed by Sefa Fast and precise regulation (PID control)  
Recipes menu with adaptive regulation parameters depending on the job :  
flex, sublimation on textile, sublimation on rigid substrates, DTG...  
Advanced electronics :  
- Fully editable recipes menus  
- Independant time for each plate  
- Multi timer (up to 2 different times)  
- Counter whit reset  
- Stop cycle function  
- ECO mode  
From 0 to 600 s (precision +/- 1%)  
From 15 to 220°C (precision +/- 1%)  
Heating time to reach 180°C : 10 min

## OPTIONAL ACCESSORIES



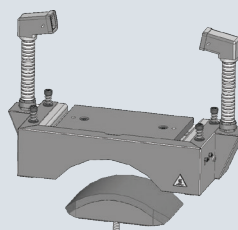
**SUPPORT TABLE**

TAB-98 LITE/R  
Support table



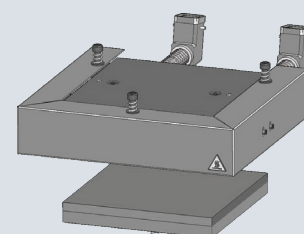
**SILENT COMPRESSOR**

COMP-74  
42dB 50L. 74L/min



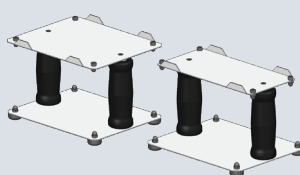
**CAP PLATE**

ACC-CAP DUPLEX MINI PRO  
size 18x8 cm for Duplex Mini  
(1 heating plate and 2 lower plates)



**LOGO PLATE**

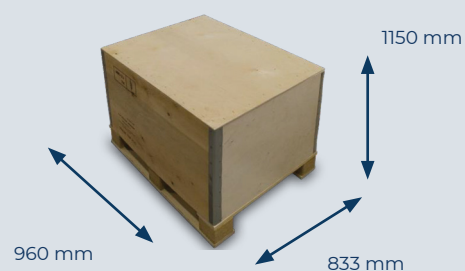
ACC-PLA DUPLEX MINI PRO  
size 16x16 cm for Duplex Mini  
(1 heating plate and 2 lower plates)



**SPECIAL TOOL**

andles to manipulate and hotswap  
the elements with safety  
guaranteed

## DIMENSIONS



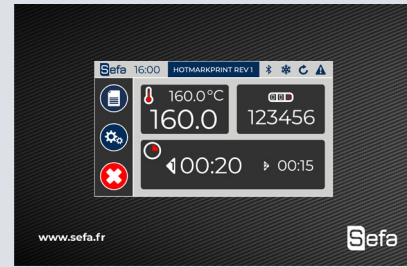
Box weight CAI-100 : 25 kg

## TECHNICAL CHARACTERISTICS

Weight	60 kg
Pressure	1765 gr/cm <sup>2</sup>
Max temperature	220°C / 429°F
Power supply	240V (single phase)
Electric power	600 W
Amperage	3 A
Plate	CAP PLATE : 18x8 cm LOGO PLATE : 16x16 cm
Max product thickness	45 mm

Features	Pneumatic Automatic opening Automatic closing 1 heating zone
----------	-----------------------------------------------------------------------

## SETTINGS



Touch electronics developed by Sefa Fast and precise regulation (PID control)  
Recipes menu with adaptive regulation parameters depending on the job :  
flex, sublimation on textile, sublimation on rigid substrates, DTG...

Advanced electronics :

- Fully editable recipes menus
- Independant time for each plate
- Multi timer (up to 2 different times)
- Counter whit reset
- Stop cycle function
- ECO mode

From 0 to 600 s (precision +/- 1%)

From 15 to 220°C (precision +/- 1%)

Heating time to reach 180°C : 10 min

## OPTIONAL ACCESSORIES



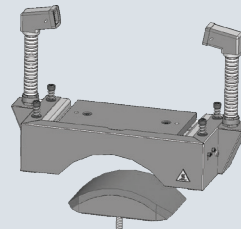
**SUPPORT TABLE**

TAB-98 LITE  
Support table



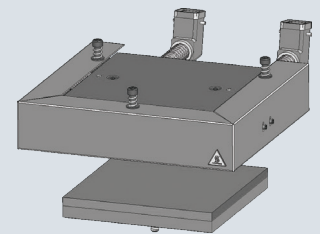
**SILENT COMPRESSOR**

COMP-74  
42dB 50L. 74L/min



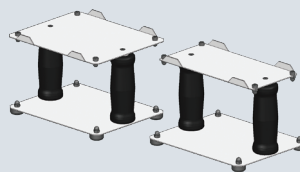
**CAP PLATE**

ACC-CAP DUPLEX MINI PRO  
size 18x8 cm for Duplex Mini  
(1 heating plate and 2 lower plates)



**LOGO PLATE**

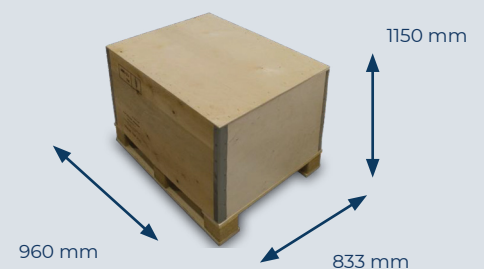
ACC-PLA DUPLEX MINI PRO  
size 16x16 cm for Duplex Mini  
(1 heating plate and 2 lower plates)



**SPECIAL TOOL**

handles to manipulate and hotswap  
the elements with safety  
guaranteed

## DIMENSIONS



Box weight CAI-100 : 25 kg