

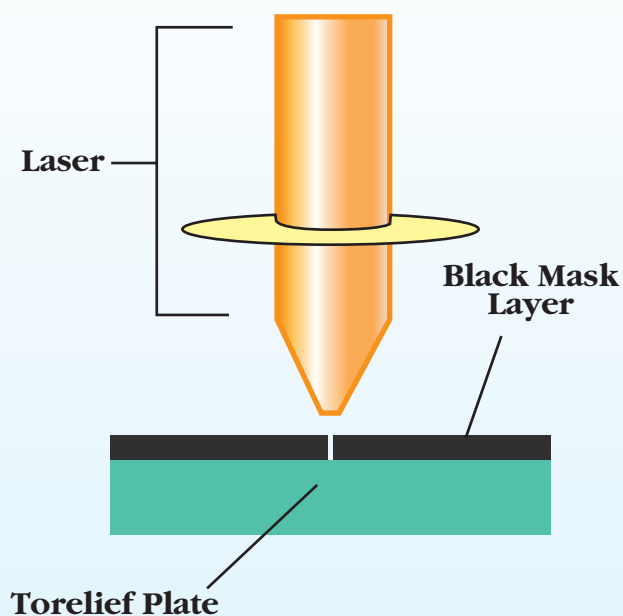
High Quality  
Quick Plate Making

## TORELIEF® CTP LETTERPRESS PLATE

Cost Effectiveness  
Environmentally Friendly

### Laser Ablation Mask System CTP

The next generation of TORELIEF Photopolymer plate technology has been incorporated into the Toray family of digital letterpress plates. The perfect combination of "CTP Technology" and "TORAY Highpolymer Technology" enables TORELIEF CTP to achieve the highest quality print.



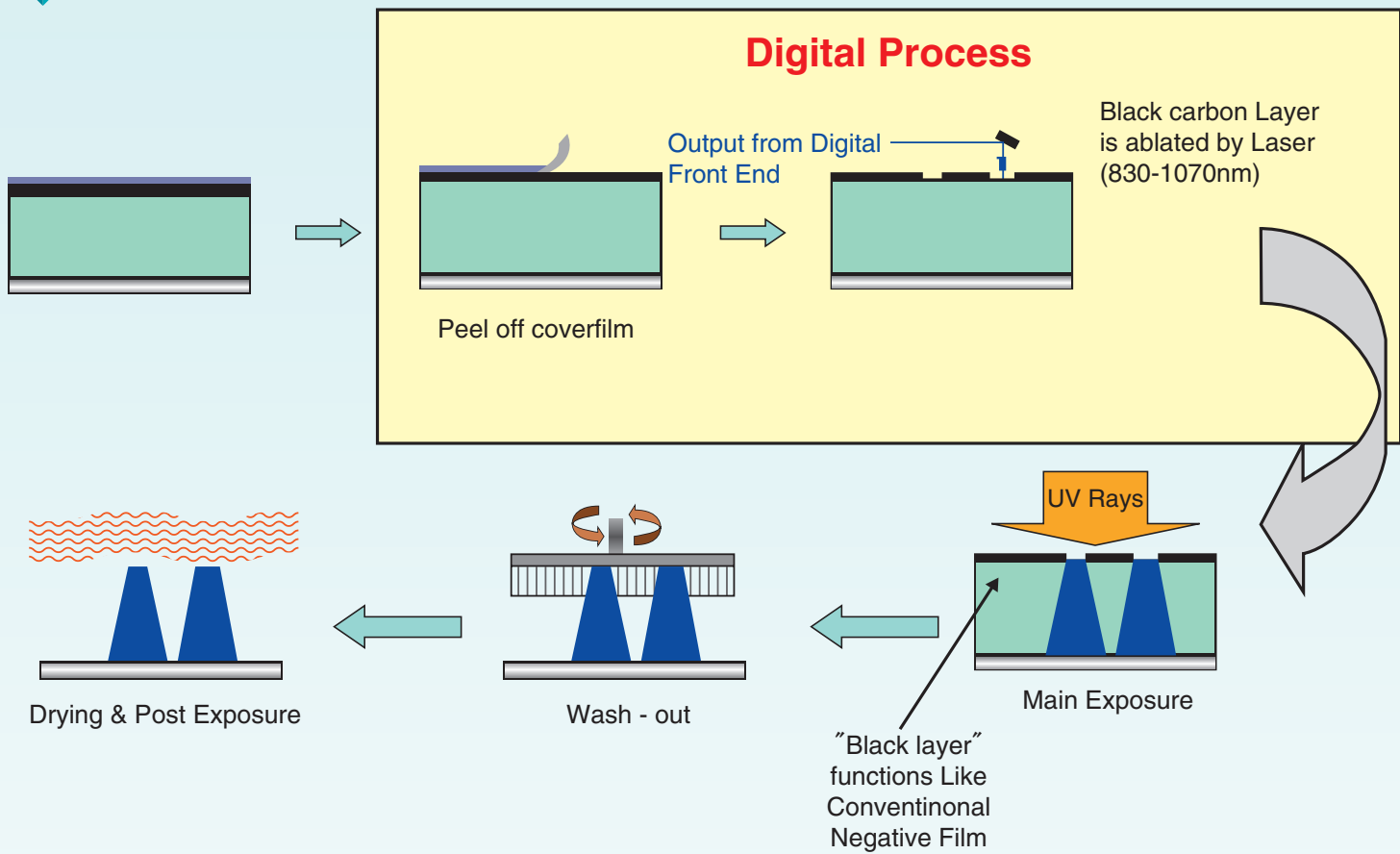
Major Characteristics :

- 1) Very fast imaging speed  
-Highly Sensitive Laser Ablative Mask-
- 2) Sharper Relief Reproduction  
-Highly Transparent Polymer-
- 3) Excellent Reproduction in Highlight Dot  
-Self-Reactive Polymer-
- 4) Deeper Reverse Image  
-Wider Exposure Latitude-

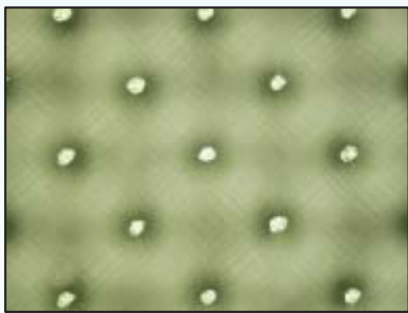
#### Specifications:

|                              | DWF 80                                      | DWF 95      | DWS 73                  | DWS 83      | DWS 95      | DWS 73F              |
|------------------------------|---|-------------|-------------------------|-------------|-------------|----------------------|
| Total thickness              | 0.80(0.031)                                 | 0.95(0.037) | 0.73(0.029)             | 0.83(0.033) | 0.95(0.037) | 0.73(0.029)          |
| Relief depth                 | 0.50(0.020)                                 | 0.65(0.026) | 0.46(0.018)             | 0.56(0.022) | 0.68(0.027) | 0.56(0.022)          |
| Base                         | Polyester film                              |             | Steel (0.25mm/0.01inch) |             |             | (0.15mm / 0.007inch) |
| Hardness                     | Shore D 55°                                 |             | Shore D 65°             |             |             |                      |
| Wash- out                    | Water/by Brush                              |             |                         |             |             |                      |
| Usable Laser                 | Fiber Lasers,IR Laser/Wavelength=830-1070nm |             |                         |             |             |                      |
| [Image Reproduction]         |   |             |                         |             |             |                      |
| Screen Range                 | 1% ~ 98% at 200L/inch                       |             |                         |             |             |                      |
| Minimum Dot Size             | φ 100 μ m(0.004)                            |             |                         |             |             |                      |
| Minimum Fine Line            | 20 μ (0.008)width                           |             |                         |             |             |                      |
| Reverse image in 300μmwidth  | 100 μ m(0.040)                              |             |                         |             |             |                      |
| Reverse image in 100μm width | 40 μ m(0.016)                               |             |                         |             |             |                      |

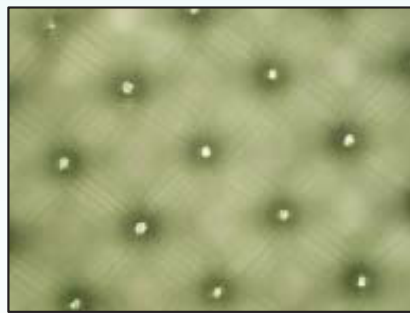
# ◆ TORELIEF Digital Plate Making Process



## Picture of 3% dot at 175 lpi:

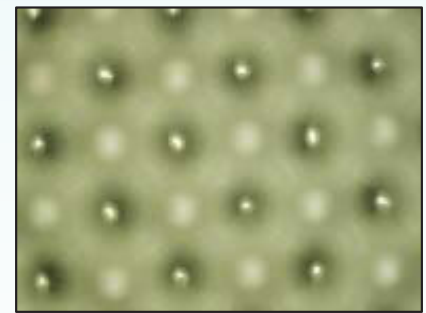


Analogue 3% 175 lpi  
WF80DY3:26 $\mu$ m



Analogue 1% 175 lpi  
WF80DY3:14 $\mu$ m

CTP  
⇒



Digital 3% 175 lpi  
DWF80:12 $\mu$ m

**TORAY**

Innovation by Chemistry

Toray Industries, Inc  
Graphic Systems Department  
8 - 1, Mihama, 1 - chome, Urayasu,  
Chiba 279 - 8555 JAPAN  
Tel : +81-(0)47-350-6049  
Fax : +81-(0)47-350-6071

Distributed by :